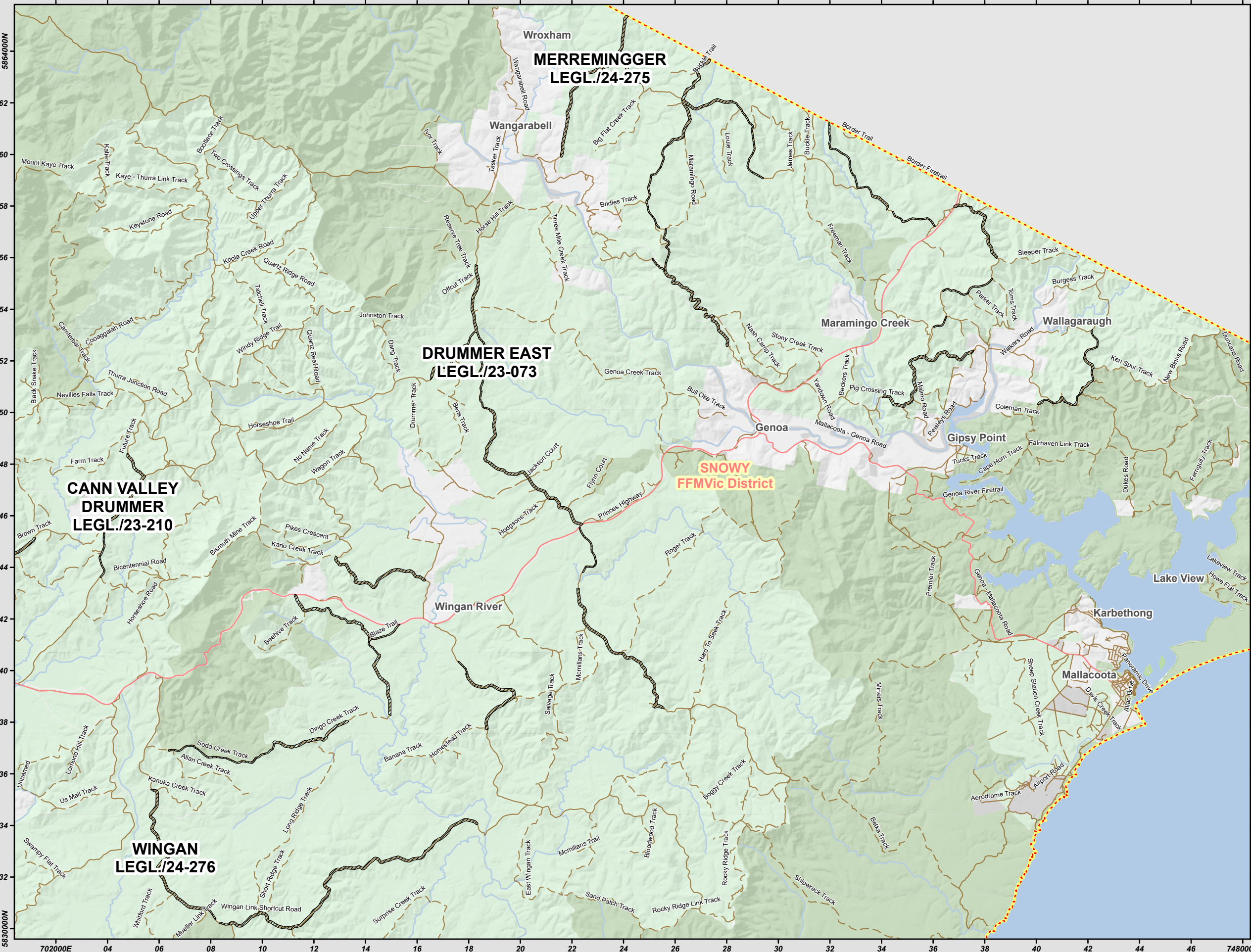


# DOMESTIC FIREWOOD COLLECTION AREAS - OVERVIEW MAP

MALLACOOTA & SURROUNDS - SPRING 2024

[www.ffm.vic.gov.au/firewood](http://www.ffm.vic.gov.au/firewood)



**Legend**

Firewood Collection Area	Permanent Waterbody
FFMVIC District	Watercourse
Main Road	Parks and Reserves
Local Road	State Forest & Forest Park
2wd	Other Public Land
4wd	Plantation

This overview map has been produced to assist the public in identifying nearby firewood collection areas generally across the region or district.

This map does not determine firewood collection areas as defined in section 57U of the *Forests Act 1958* and should not be used beyond the intended purpose of general orientation within the landscape.

Refer to the 'LEGL' plans referenced on this map and lodged with the Central Plan Office of the Department of Transport and Planning which identify the area of State forest to which the firewood collection area determination applies.

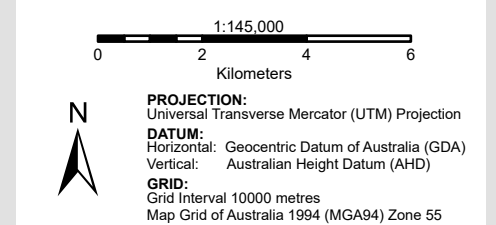
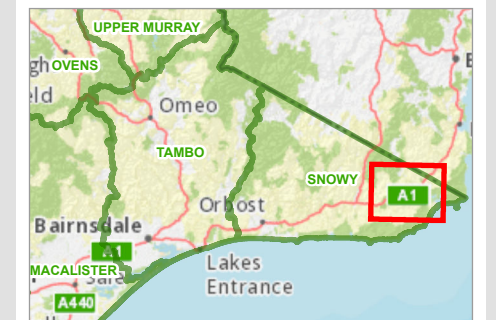
Detailed maps of firewood collection areas that are open from time to time may be obtained from: [www.ffm.vic.gov.au/firewood](http://www.ffm.vic.gov.au/firewood)

There is no guarantee that firewood will be available for collection in the firewood collection areas after they have been opened.

All persons entering and collecting in the firewood collection areas must have regard for their safety and the safety of others and must comply with all relevant laws when in State forest/Parks.

Persons are not permitted to collect firewood in areas identified by signs as active VicForests harvesting coupes.

Firewood collection areas may be closed at short notice to allow for planned burning.



**Additional information**  
 Spatial data is sourced from the Victorian Spatial Data Library (VSDL).  
 Map produced by Gippsland Region August 2024  
 Copyright © The State of Victoria, Department of Energy, Environment and Climate Action, 2024

**Disclaimer**  
 This publication may be of assistance to you but the State of Victoria and its employees do not guarantee that the publication is without flaw of any kind or is wholly appropriate for your particular purpose and therefore disclaims all liability for any error, loss or other consequence which may arise from you relying on any information in this publication.

**Accessibility**  
 If you would like to receive this publication in an accessible format such as large print or black and white please telephone 136 186, or email [customer.service@delwp.vic.gov.au](mailto:customer.service@delwp.vic.gov.au). Deaf, hearing impaired or speech impaired? Call us via the National Relay Service on 133 677 or visit [www.relay.vic.gov.au](http://www.relay.vic.gov.au)