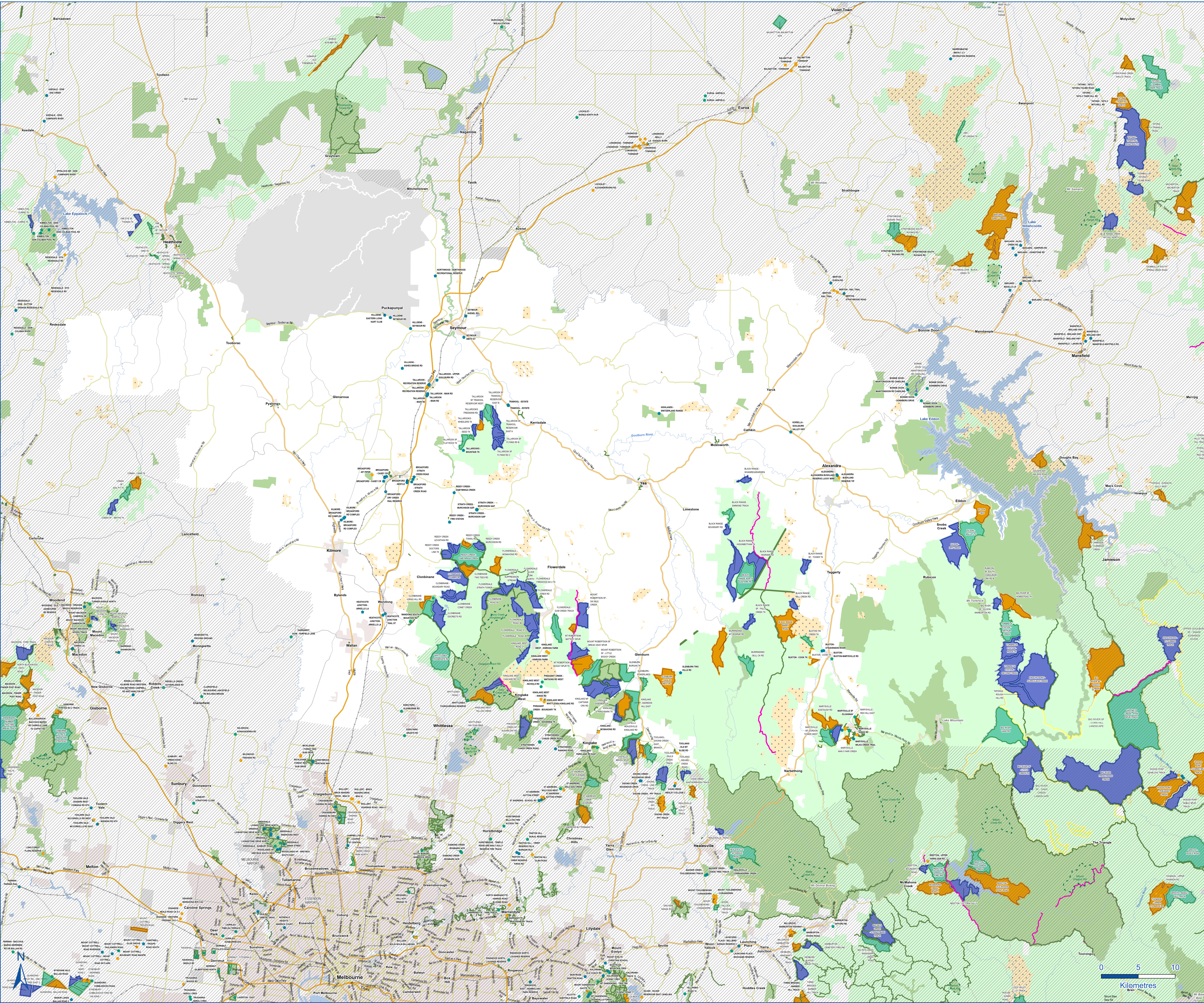


# Joint Fuel Management Program

CFA District 12

2024-2025 to 2026-2027



- 2024-25 Planned Burns (<50Ha)
- 2025-26 Planned Burns (<50Ha)
- 2026-27 Planned Burns (<50Ha)
- 2024-25 Planned Burns (50Ha+)
- 2025-26 Planned Burns (50Ha+)
- 2026-27 Planned Burns (50Ha+)
- Landscape Mosaic Burn
- 2024-25 Non Burning Works
- 2024-27 New Strategic Breaks
- NSW National Park
- State Forest Plantations
- State Forest

- Railway Line
- Freeway
- Highway
- Major Road
- Collector Road
- Local Road
- River / Stream
- Waterbody
- Wetland or Swamp
- Parks and Reserves
- State Forest
- Timber Plantation
- Other Public Land
- Reference Areas

Map Produced by Forest Fire Operations Division - Hume, 29 October 2024.  
Copyright © The State of Victoria, Department of Energy, Environment and Climate Action (DEECA) 2024

Map Datum: Geographic Datum of Australia (GDA2020)  
Map Projection: GDA2020 (VicGrid)  
Map Scale: 1:165,000 when printed at A0 or viewed at 100%

**Disclaimer:**  
This publication may be of assistance to you, but the State of Victoria and its employees do not guarantee that the publication is without flaw of any kind or is wholly appropriate for your particular purposes and therefore disclaims all liability for any error, loss or other consequence which may arise from you relying on any information in this publication.

**Accessibility:**  
If you want this publication in an accessible format, such as large print or black-and-white, please phone 136 186, or email [customer.service@deeca.vic.gov.au](mailto:customer.service@deeca.vic.gov.au). Deaf, or hearing or speech impaired? Call us via the National Relay Service on 133 677 or visit [www.relayservice.com.au](http://www.relayservice.com.au)

